

UTS™ PRODUCT SPECIFICATIONS

Fully Automatic, All Inclusive, Alternating Mattress System

MATTRESS

Mattress Type	Full Replacement	Foam Pocket under Cover	Yes (1" Foam)
Air Output Location	User Foot End (L/H Side)	Zippered Cover	Yes
Dimensions (L x W x H)	200 x 90 x 18 cm	Top Cover	Stitched Top Cover
System Alternation	1:2	Top Cover Screen Printed	Yes
Number of Cells	21	Model & D.O.B. On Label	Yes
Cell Height in Inch	6" (Foam Incl.)	Base Material	Polyester/PVC
Static Head Cells	Yes	Foam Pocket to Base	Yes
Narrow Heel Cells	Yes	Foam Supplied	Yes
Cell Structure	Foam & Air Cell	Quick Guide Pocket	Yes
Cell Colour/s	Blue	Maximum User Weight	175 kg
Connection Type	Quick Connect	Fixing Strap	Webbing
Top Cover Material / Type	Stretch, PU/Nylon	Strap Length on Base	35"
Top Cover Fire Retardancy	Crib 5	CPR Type	Twist CPR (Head End R/H Side)
Top Cover Wash Temp	95 Degree	Warranty Period	12 Months
Cover Colour	Blue		

PUMP

Air Output Location	User (L/H Side)	Time to Return Static to AP	30 min
Alternation (1:2, 1:3, 1:4)	1:2	Reactivate From Mute	20 min
Power	100-240V/50-60Hz	Continuous Low Pressure	Yes Static (CLP)
Control	Digital	Pressure Adjustment	Yes (5 Comfort Settings)
Number of Fuses	1	Manual Default Comfort	Level 2
Visual 'Power-On' Indicator	Green LED on Handset	Noise Level (db) +/- 1	28
Visual 'Power-Fail' Alarm	Yes (Handset Display)	Control Panel Lock	Auto (5min) Lock (1sec)
Audible 'Power Fail' Alarm	Yes	Weight Sensor (Software)	Yes
Visual L/P Alarm	Yes (Handset Display)	Dimensions (L x W x H)	35 x 13.5 x 22.4 cm
Audible L/P Alarm	Yes (5 min after Visual)	User Weight	30-175 kgs
Connection Type	Quick Connect	Power Plug	EU/UK/AUS
Cycle Time	10 min	Plug Type	IEC C7/C8
Adjustable Cycle Times	Pre-Set	Approval Rating	IEC60601-1 IEC60601-1-2 IEC60601-1-11
Pressure Capacity	20 - 60 +/- 6 mmHg	IP (Ingress Protection)	IP22
Adjustable Pressure	Handset (30-175 kg)	Fire Retardant Rate (ABS)	Yes
Air Output Capacity	6 LPM	Warranty Period	12 Months
Alternating / Static Button	Yes	CE Mark	Caremed
Nursing/Auto-Firm	Yes (Max)		
Auto Return to AP Mode	Max and Static Mode		
Time to Return Max to AP	30 min		

GLOBAL ODM/OEM SUPPLY

Caremed is the world's leading ODM/OEM manufacturer of pressure care mattress systems (alternating and low air loss).

By very closely managing quality and consistency at the five product focussed manufacturing facilities in Taiwan, and by not competing directly with customers, Caremed has built an enviable reputation for innovation, stable supply and trust.



Distributed by Polymorit

Website: www.polymorit.com and
<https://universaltherapysystems.com>

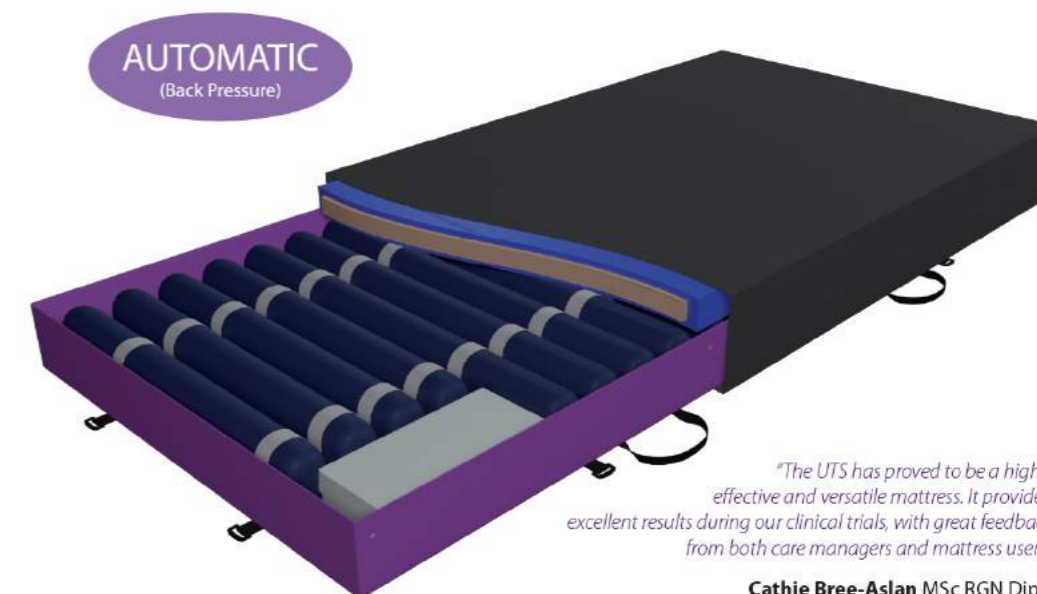
Email: sales@polymorit.com



Telephone: 0330 660 0125

UNIVERSAL THERAPY SYSTEM (UTS™)

All Inclusive, Alternating Mattress System



"The UTS has proved to be a highly effective and versatile mattress. It provided excellent results during our clinical trials, with great feedback from both care managers and mattress users".

Cathie Bree-Aslan MSc RGN DipN

The fully automatic UTS™ (Universal Therapy System) is the latest development by leading pressure care manufacturers Caremed Supply Inc. The UTS™ has established a new category within the pressure care spectrum for mattresses.

Independent clinical data has shown it can replace the need for both "hybrid" and traditional "full replacement alternating mattresses", providing a versatile mattress option allowing care managers to deliver higher levels of pressure care for various patient types and care scenarios.

The state of the art system has a host of features, including:-

- Auto-Sensing Comfort Control
- Torsion Guard Air Cells™
- User Step-Up / Step-Down Flexibility
- Full Depth Protection
- AOD™ (Air on Demand) Efficiency
- Outstanding Clinical Performance
- Full Depth Alternation
- Zonal Management & Care
- Multi-Functional Surface Support
- Continuous Low Pressure (CLP) Therapy
- Micro Climate Management
- Advanced Multi-Stretch Cover
- Alternative Power Source Options
- Ease of Stocking & Shipping



Universal Therapy System (UTS™)

AUTO-SENSING COMFORT CONTROL

Fully automatic weight setting and comfort control is delivered by the UTS™ mattress following installation. Finer levels of sensitivity can be controlled on the 'intelligent' system using the dedicated handset.

STEP-UP / STEP-DOWN FLEXIBILITY

Time and disruption is significantly reduced for the user and equipment provider at the point of surface pressure review using the UTS™ Step-up/Step-down options. Whether the customer requires a static surface or an alternating mattress, the UTS™ delivers both, effectively.

ZONAL MANAGEMENT & CARE

Flexible, therapeutic zonal care (head, sacral and heel) and protection is delivered by the UTS™ through a host of customisable options for the user.

USER FREEDOM & INDEPENDENCE

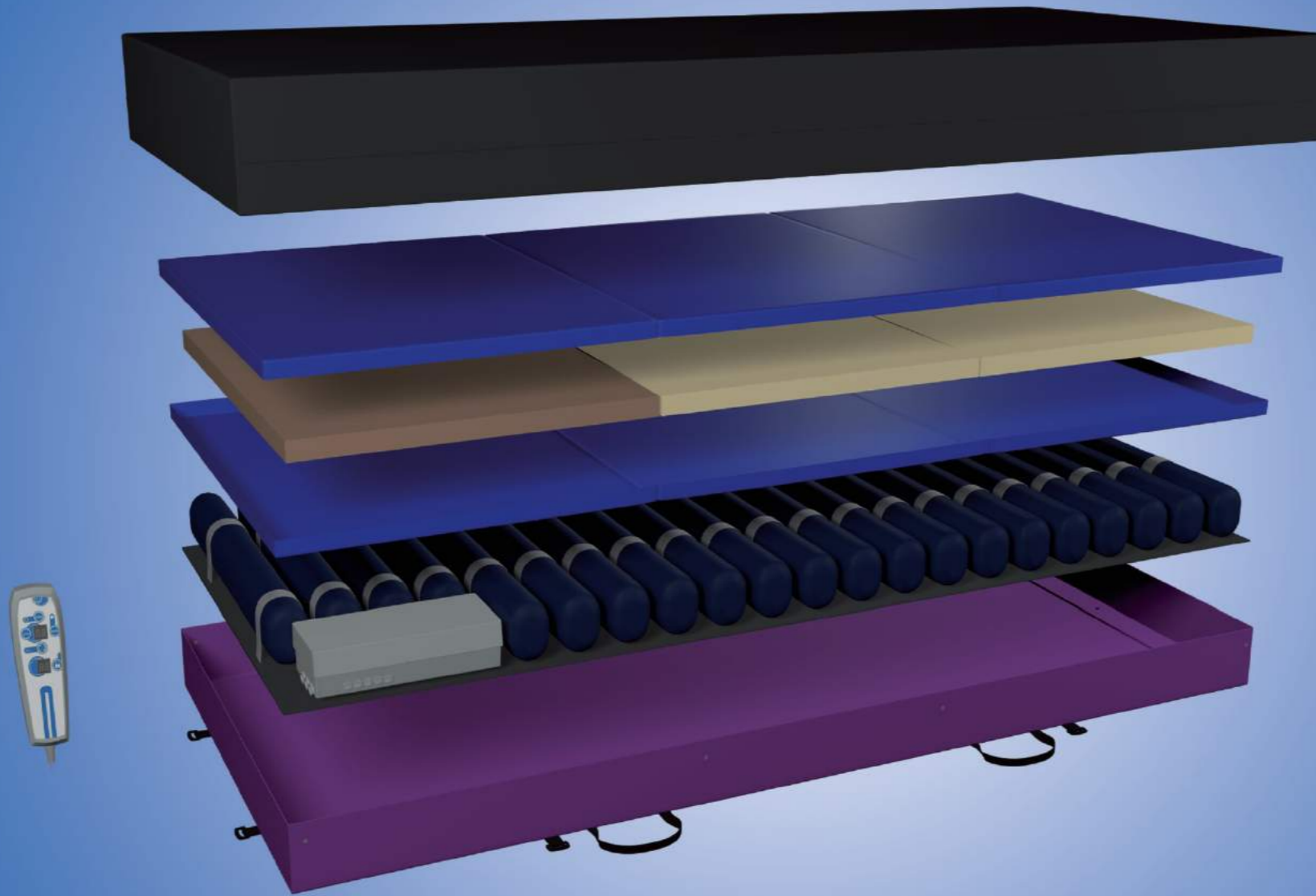
By switching product control to a more accessible handset, the UTS™ delivers freedom, independence and ease of operation to both users with limited or impaired mobility and caregivers alike.

CONTINUOUS LOW PRESSURE THERAPY

Greater overall pressure distribution for the UTS™, when in static mode, is delivered through CLP management, which is particularly beneficial to hyper sensitive patients and any user requiring additional comfort.

MICRO CLIMATE MANAGEMENT

The vented heat extraction system within the UTS™ delivers ever high levels of user comfort and significant levels of moisture reduction, (see clinical evidence for further information).



AOD™ (AIR-ON-DEMAND) EFFICIENCY

The in house manufactured AOD (air on demand) compressor provides greater efficiency and reliability, with near silent running performance.

AESTHETICALLY PLEASING

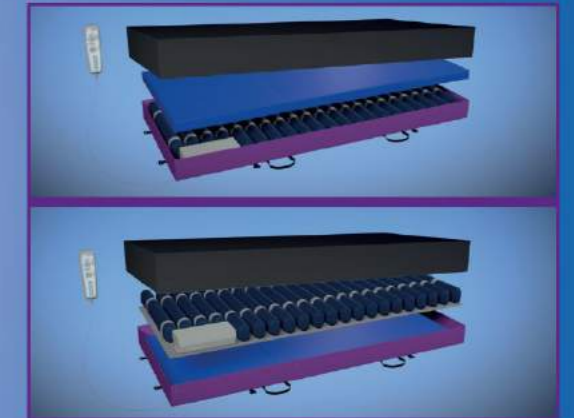
Enclosing the traditional control unit within the UTS™ mattress removes all obvious visual reference to a medical product being present, which is often very important in a home care environment.

ADVANCED MULTI-STRETCH COVER

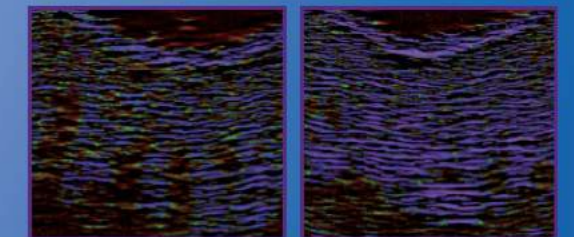
By managing its own material coating and lamination factory, Caremed provides the very best in multi-stretch cover manufacture and ingress protection.

MULTI-FUNCTIONAL SURFACE SUPPORT

Moving the foam filled overlay section, positioned on top of the alternating cells to below the cells, enables the UTS™ to be transformed from being a comfort driven system to a clinically result focussed product.



OUTSTANDING CLINICAL PERFORMANCE



** Ultra Sound scans in clinical trials has shown the UTS™ to be very effective in aiding the healing of wounds and tissue damage*

By delivering full depth alternation, unhindered by foam, the UTS™ system has been proven through evidence based clinical research to fully support reactive hyperaemia and the treatment of all grades of pressure ulcers.

UNHINDERED - FULL DEPTH - ALTERNATION

The UTS™ contains a protective layer of foam within a separate chamber at the base of the cell, keeping the user safe from any risk of 'bottoming-out'.

Unlike many of competitive foam and cell combination products, where the foam fills the entire cell, this design enables the UTS™ to provide the same FULL (7"), clinically superior, unhindered alternation, as many of the Full Replacement mattresses.



TORSION GUARD AIR CELLS™

By housing protective foam within a dedicated section in the lower part of the full depth cell, the UTS™ significantly reduces torsion (twist) of the foam, especially in the heel zone area, where many competitive products often fail.



POWER FROM BED SUPPLY

Working in partnership with TiMOTION, one of the world leading bed actuator manufacturers, has enabled Caremed to develop a 24 volt powered version of the UTS™.

The new UTS™ can, if plugged directly into a specific TiMOTION actuator control box, operate both the mattress system and the bed itself from the same universal handset.

EASE OF STOCKING & SHIPPING



The UTS™ mattress has been designed specifically to be packed and shipped easily and economically in standard sized outer cartons.