

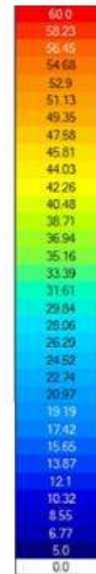
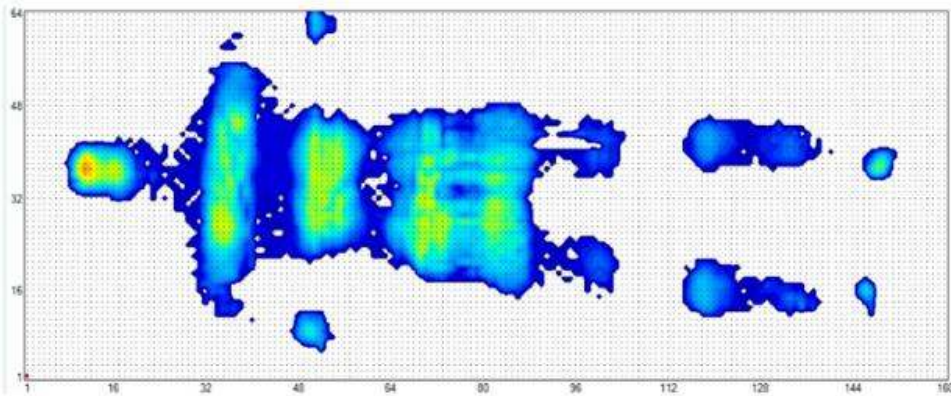
UTS Pressure Mapping:

Test object: Male, 100Kg, Mode P3 (40mmHg)

1. **Active (Alternate, With Pad)**

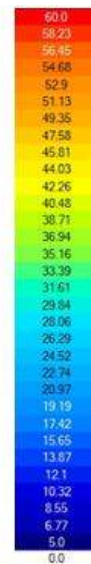
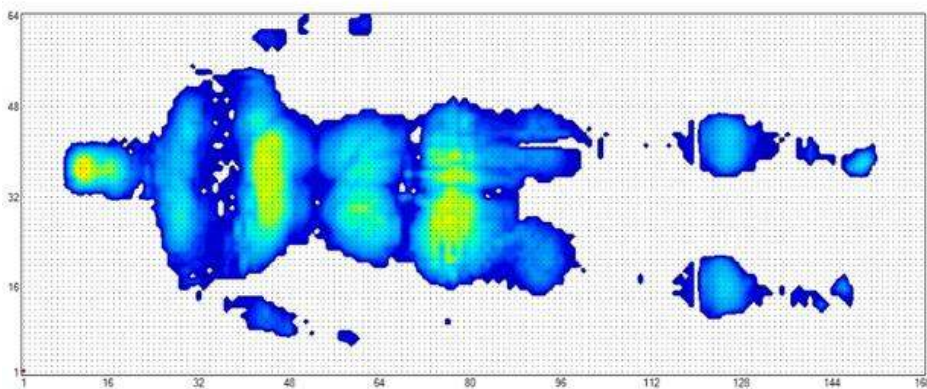
With Pad, Male, 100Kg, ALT Mode P3 (40mmHg)

Cell A Pressure Mapping



With Pad, Male, 100Kg, ALT Mode P3 (40mmHg)

Cell B Pressure Mapping

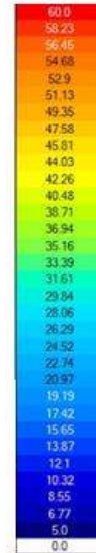
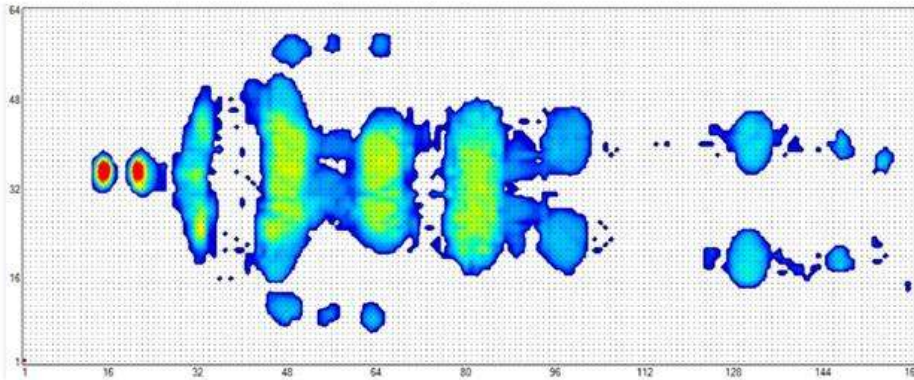


With Pad, Male, 100Kg, ALT Mode P3 (40mmHg)			
Cell A		Cell B	
Interface Pressure (mmHg)	UTS	Interface Pressure (mmHg)	UTS
> 30	17%	> 30	12%
≤ 30	11%	≤ 30	11%
≤ 25	13%	≤ 25	13%
≤ 20	13%	≤ 20	19%
≤ 15	29%	≤ 15	31%
≤ 10	16%	≤ 10	14%
≤ 5	0%	≤ 5	0%

2. Active (Alternate, Without Pad)

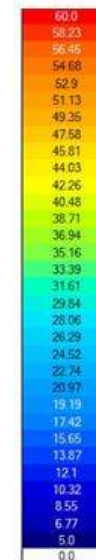
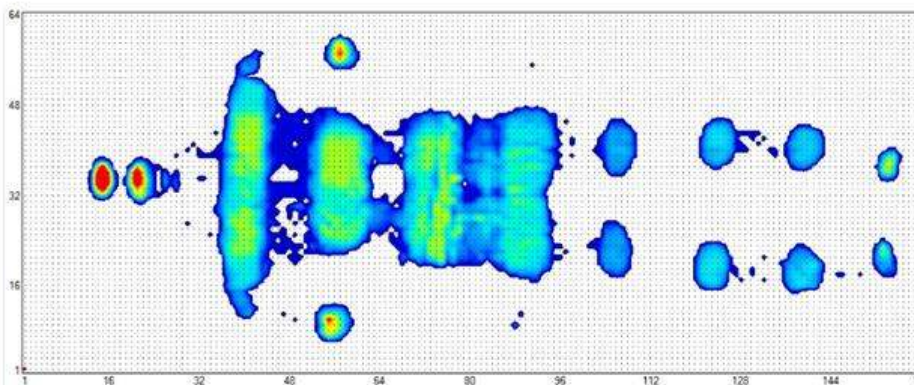
Without Pad, Male, 100Kg, ALT Mode P3 (40mmHg)

Cell B Pressure Mapping



Without Pad, Male, 100Kg, ALT Mode P3 (40mmHg)

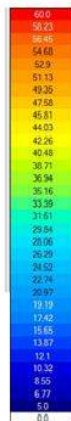
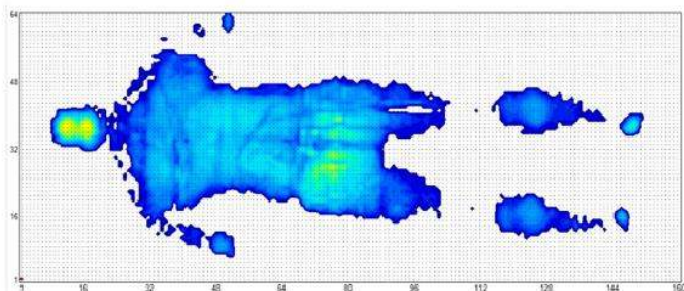
Cell A Pressure Mapping



Without Pad, Male, 100Kg, ALT Mode P3 (40mmHg)			
Cell A		Cell B	
Interface Pressure (mmHg)	UTS	Interface Pressure (mmHg)	UTS
> 30	23%	> 30	24%
≤ 30	19%	≤ 30	13%
≤ 25	15%	≤ 25	17%
≤ 20	14%	≤ 20	16%
≤ 15	19%	≤ 15	22%
≤ 10	10%	≤ 10	8%
≤ 5	0%	≤ 5	0%

3. Active (Static, With Pad)

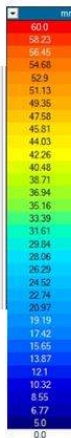
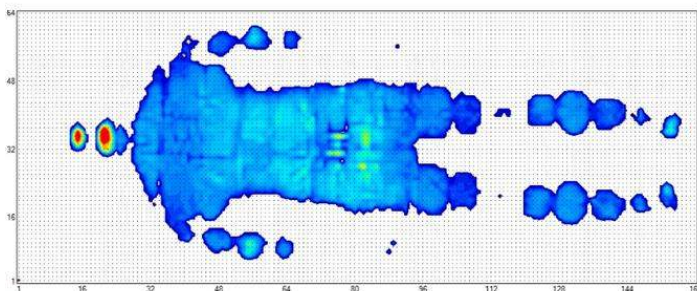
With Pad, Male, 100Kg, Static Mode P3 (40mmHg)



With Pad, Male, 100Kg, Static Mode P3 (40mmHg)	
Interface Pressure (mmHg)	UTS
> 30	4%
≤ 30	15%
≤ 25	23%
≤ 20	23%
≤ 15	28%
≤ 10	7%
≤ 5	0%

4. Active (Static, Without Pad)

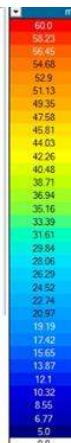
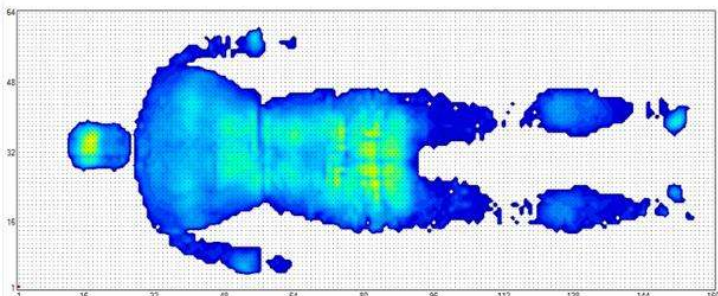
Without Pad, Male, 100Kg, Static Mode P3 (40mmHg)



Without Pad, Male, 100Kg, Static Mode P3 (40mmHg)	
Interface Pressure (mmHg)	UTS
> 30	2%
≤ 30	11%
≤ 25	26%
≤ 20	36%
≤ 15	23%
≤ 10	2%
≤ 5	0%

5. Reactive (Non-power, With Pad)

Non-Power. With Pad, Male, 100Kg



Non-Power. With Pad, Male, 100Kg	
Interface Pressure (mmHg)	UTS
> 30	10%
≤ 30	15%
≤ 25	17%
≤ 20	20%
≤ 15	32%
≤ 10	6%
≤ 5	0%